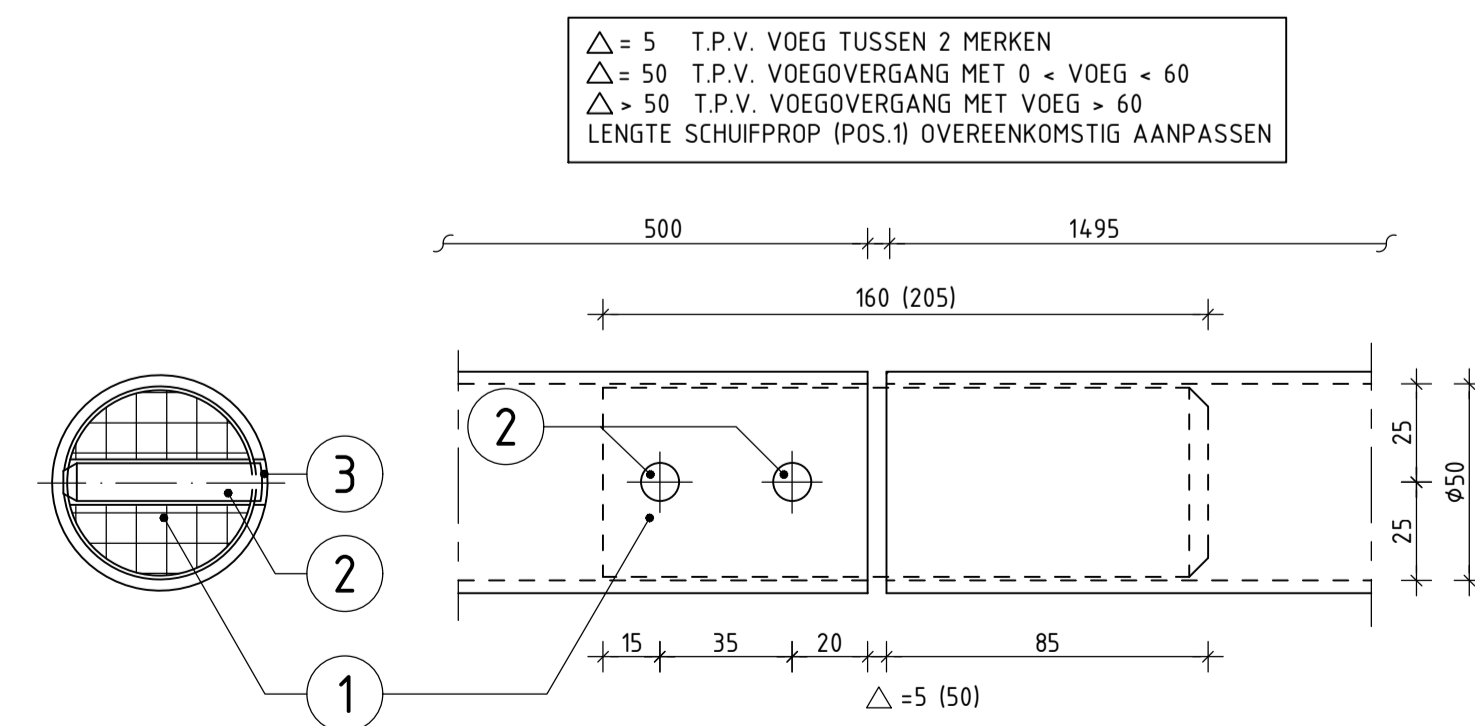


3D VIEW

Technical drawing of a vertical pipe assembly. The drawing shows a cross-section of the assembly. The total height is 265. The distance from the top to the first flange is 105. The distance from the first flange to the second flange is 85. The distance from the second flange to the bottom of the pipe is 160. The pipe has a diameter of $\varnothing 20$. The assembly includes a top cap (11), a flange (12), a gasket (13), and a bottom flange (14). The top cap has a diameter of 50.

schaal 1:



schaal 1:2

schaal 1:50

schaal 1:50

schaal 1:50

schaal 1:50

schaal 1:50

schaal 1:50

schaal 1:10

schaal 1:5

schaal 1:10

schaal 1:5

