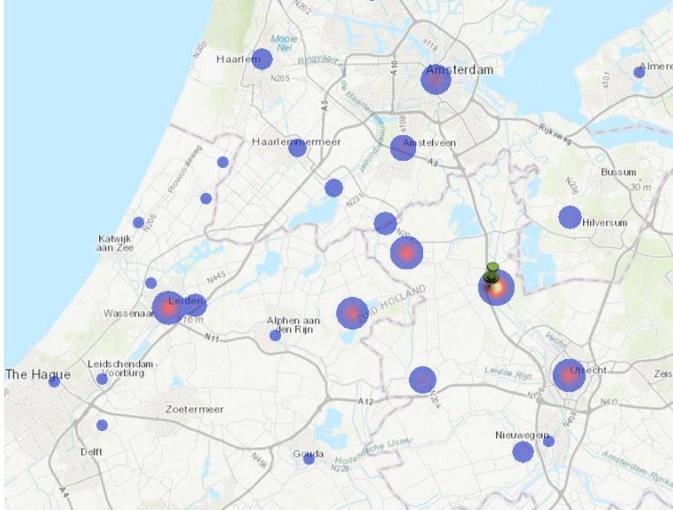


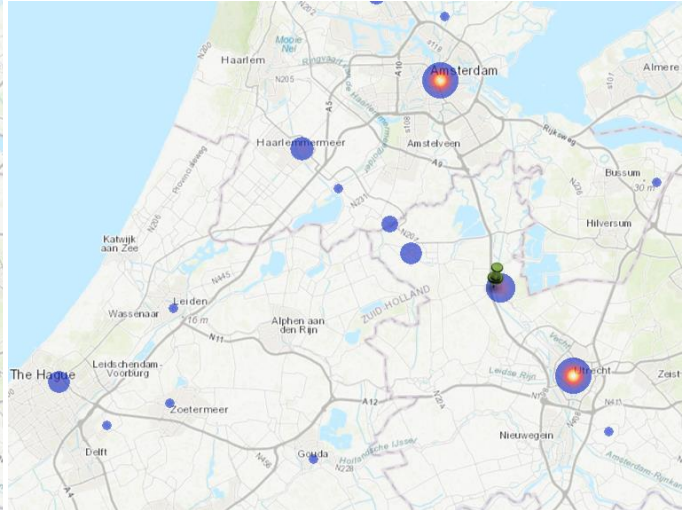
Detail overzicht herkomst- en bestemming per P+R locatie

De linker afbeelding is de herkomstkaart en de rechter afbeelding de bestemmingkaart.

P+R Breukelen

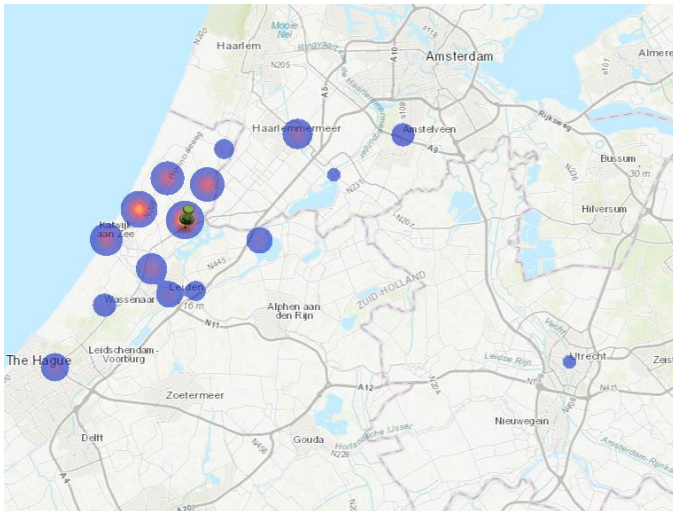


1. Stichtse Vecht	27%
2. De Ronde Venen	13%
3. Utrecht	12%
4. Nieuwkoop	10%
5. Amsterdam	6%

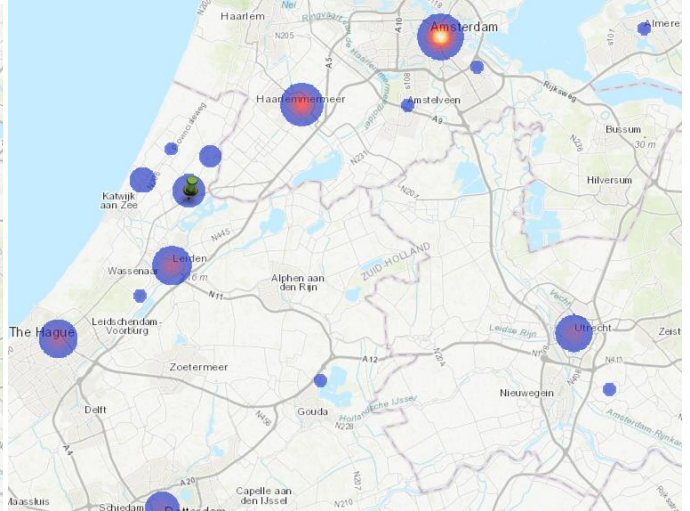


1. Utrecht	36%
2. Amsterdam	35%
3. Stichtse Vecht	8%
4. Rotterdam	3%
5. Haarlemmermeer	2%

P+R Sassenheim

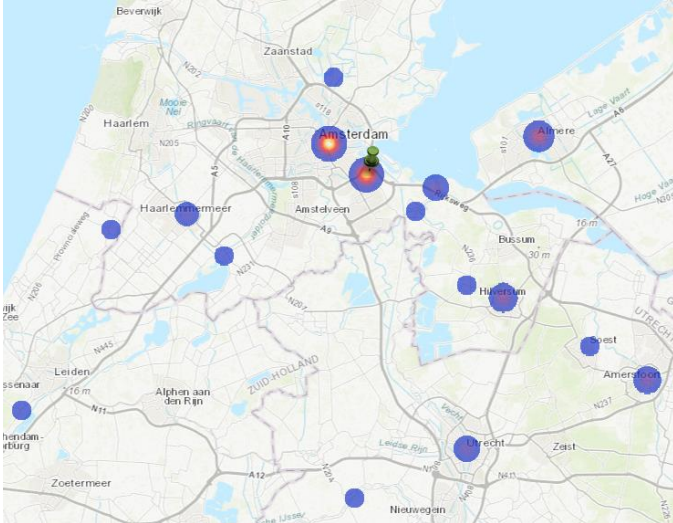


1. Teylingen	26%
2. Lisse	19%
3. Noordwijk	11%
4. Noordwijkerhout	9%
5. Katwijk	8%

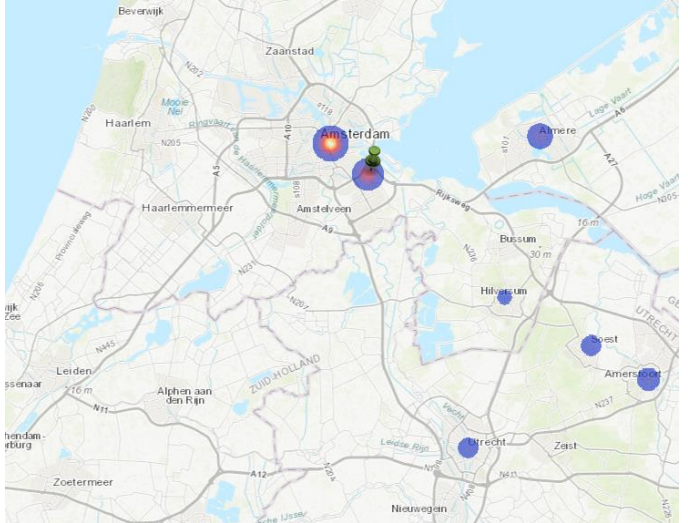


1. Amsterdam	35%
2. Haarlemmermeer	18%
3. Leiden	10%
4. Den Haag	9%
5. Utrecht	7%

P+R Diemen

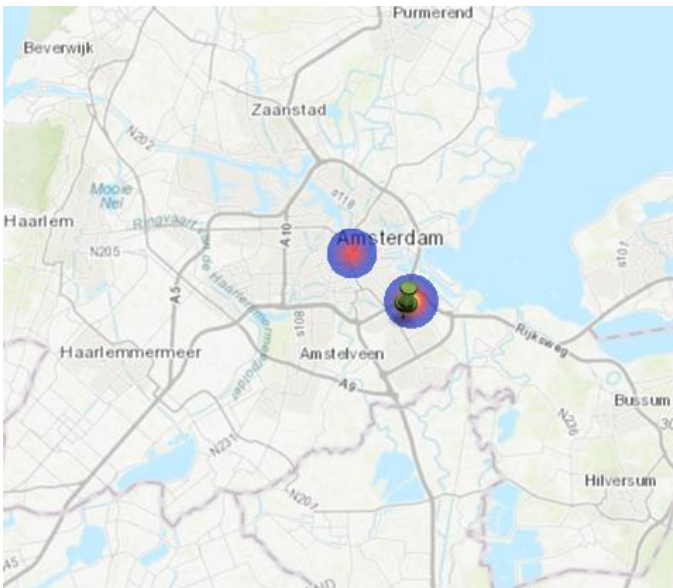


1. Diemen	30%
2. Amsterdam	24%
3. Almere	9%
4. Hilversum	6%
5. Amersfoort	5%

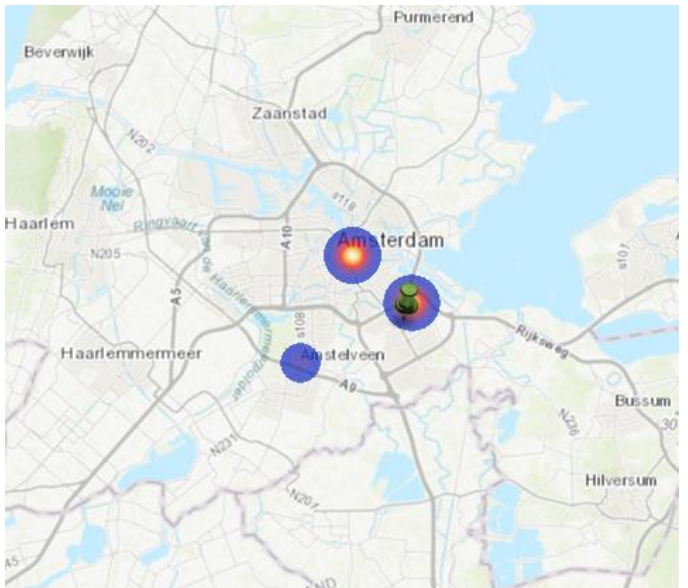


1. Amsterdam	57%
2. Diemen	23%
3. Almere	6%
4. Amersfoort	4%
5. Utrecht	2%

P+R Diemen Zuid



1. Diemen	63%
2. Amsterdam	31%
3. Hoorn	3%
4. Utrecht	3%

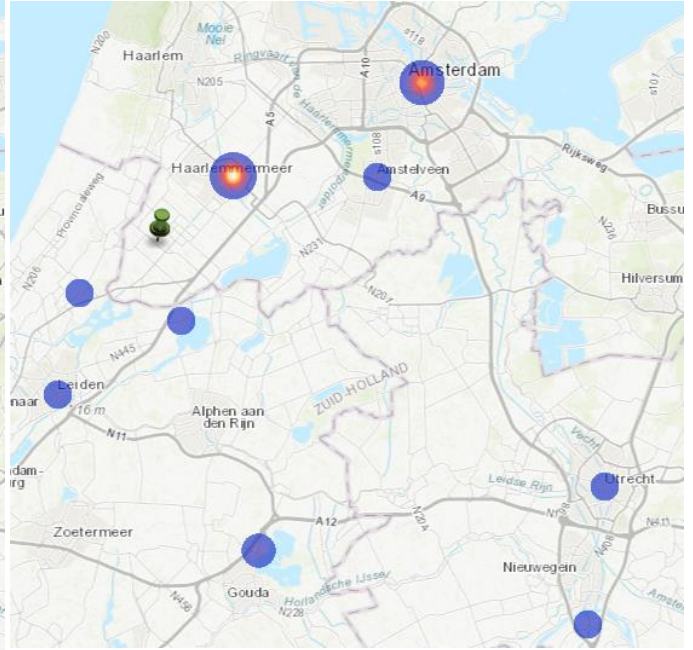


1. Amsterdam	45%
2. Diemen	42%
3. Alkmaar	7%
4. Amstelveen	3%
5. Den Haag	3%

P+R Getsewoud Zuid

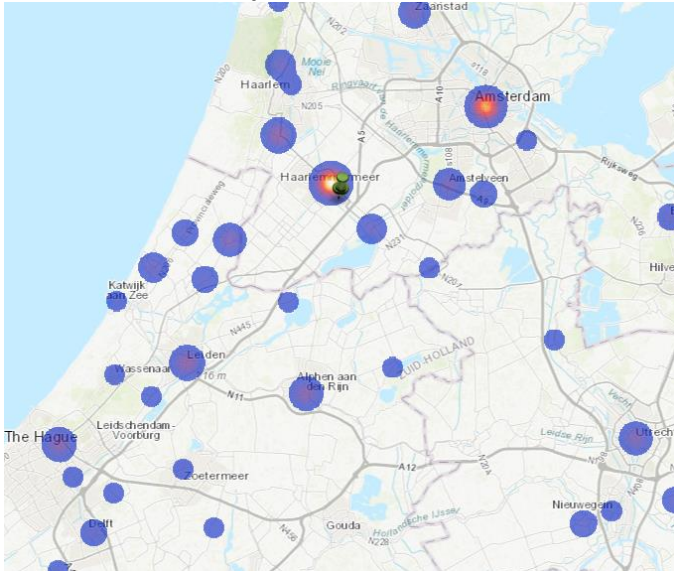


1. Haarlemmermeer	49%
2. Hillegom	9%
3. Lisse	9%
4. Kaag en Braassem	7%
5. Bloemendaal	7%

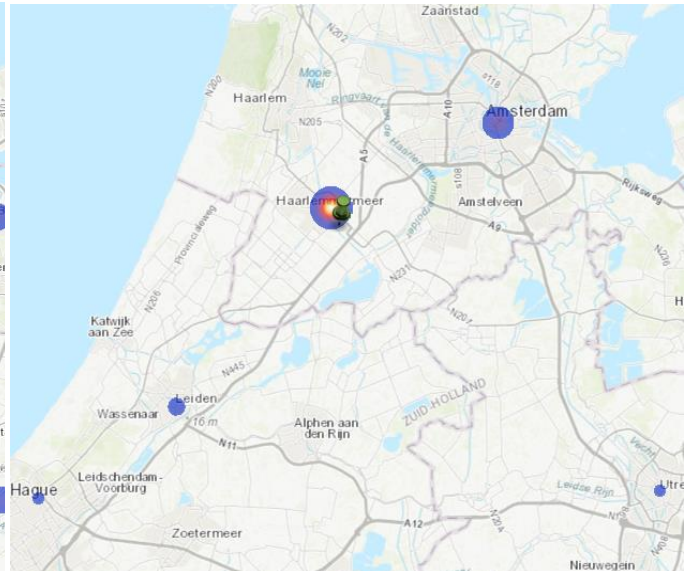


1. Haarlemmermeer	46%
2. Amsterdam	33%
3. Bodegraven-Reeuwijk	5%
4. Amstelveen	3%
5. Leiden	3%

P+R Hoofddorp

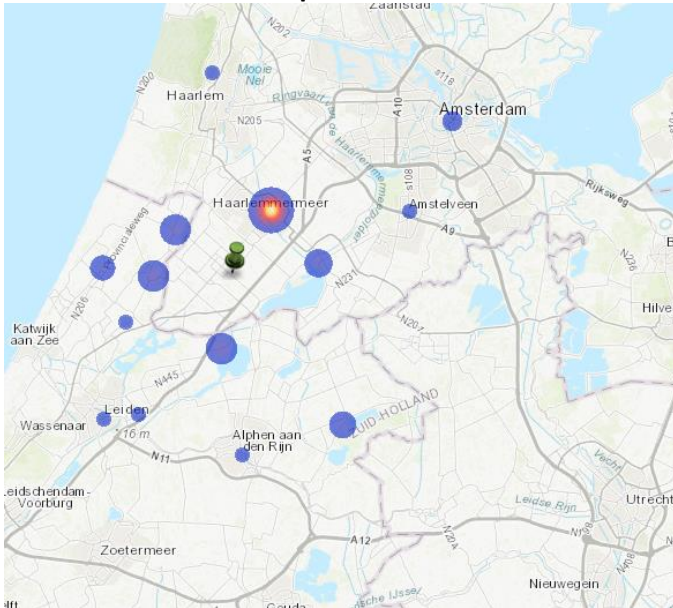


1. Haarlemmermeer	18%
2. Amsterdam	13%
3. Heemstede	7%
4. Leiden	7%
5. Rijswijk	7%

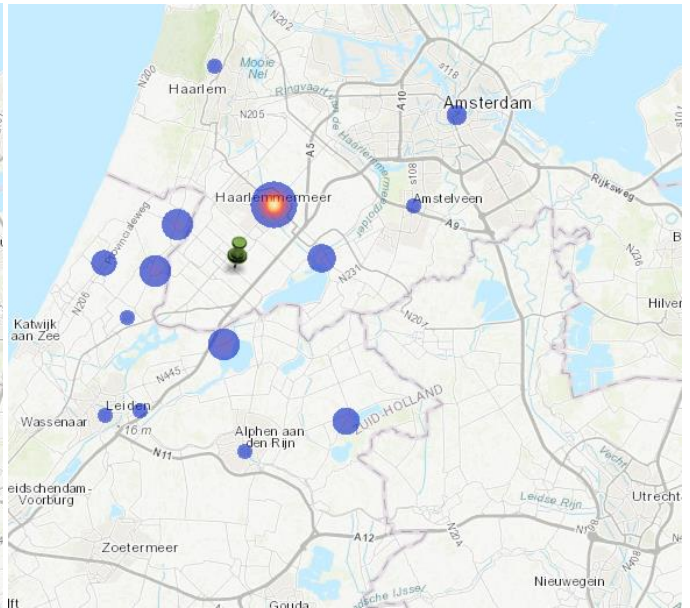


1. Haarlemmermeer	75%
2. Amsterdam	10%
3. Leiden	2%
4. Den Haag	2%
5. Utrecht	1%

P+R Nieuw-Vennep Station

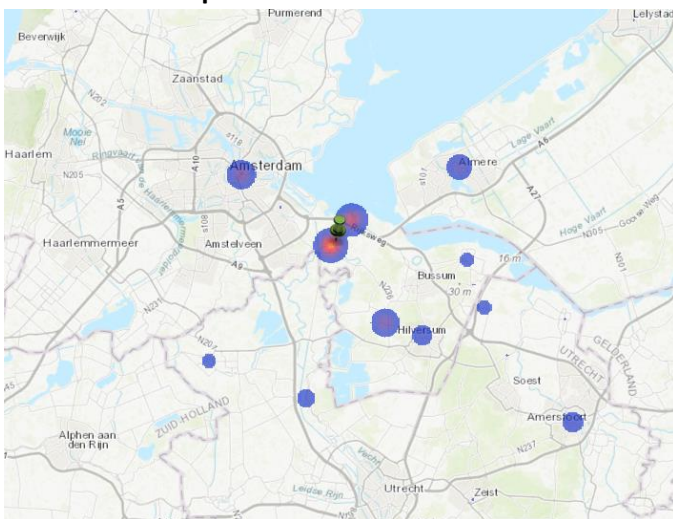


1. Haarlemmermeer	63%
2. Kaag en Braassem	6%
3. Lisse	6%
4. Hillegom	5%
5. Aalsmeer	4%

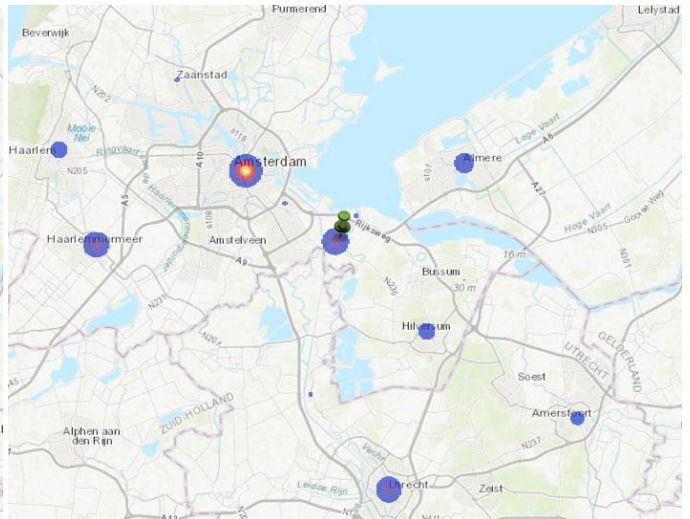


1. Amsterdam	36%
2. Den Haag	23%
3. Haarlemmermeer	17%
4. Leiden	6%
5. Utrecht	5%

P+R Weesp Station

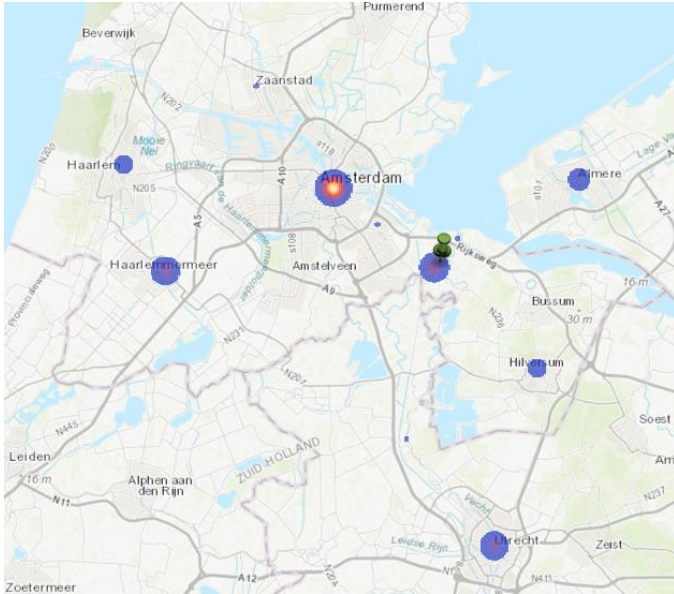


1. Weesp	37%
2. Muiden	21%
3. Amsterdam	10%
4. Wijdmeren	9%
5. Almere	5%

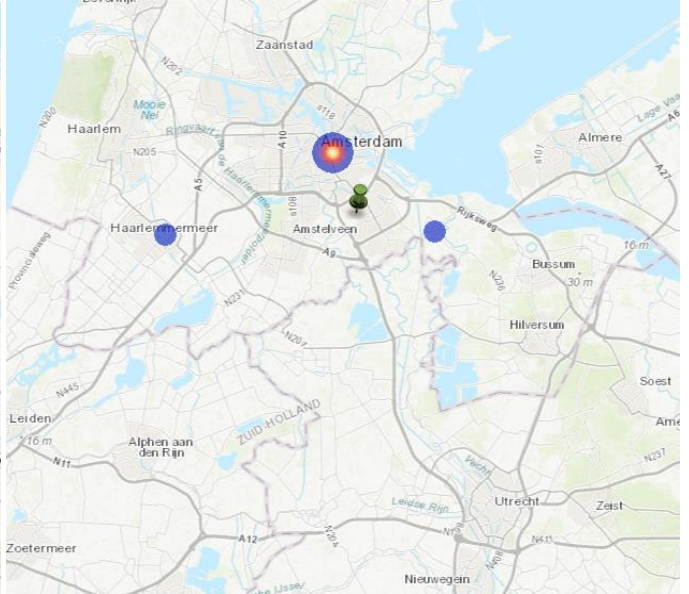


1. Amsterdam	59%
2. Weesp	12%
3. Haarlemmermeer	10%
4. Utrecht	8%
5. Almere	3%

P+R Q-Park Stationsplein (Duivendrecht)

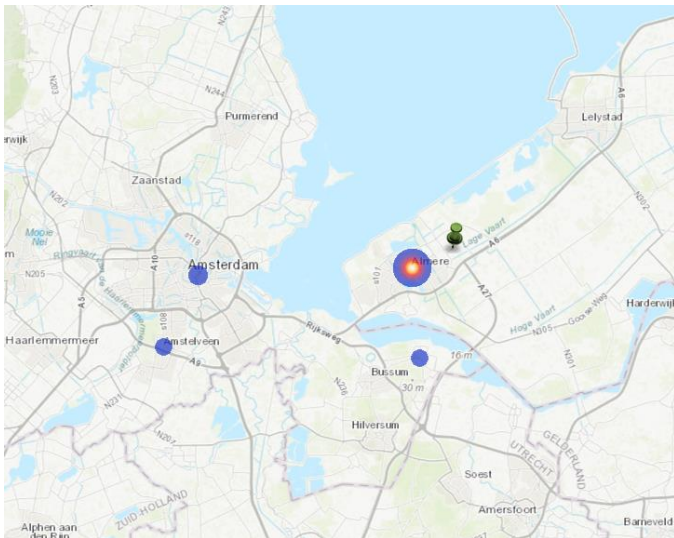


1. Ouder-Amstel	28%
2. Amsterdam	12%
3. Almere	7%
4. Zaanstad	5%
5. Amersfoort	5%

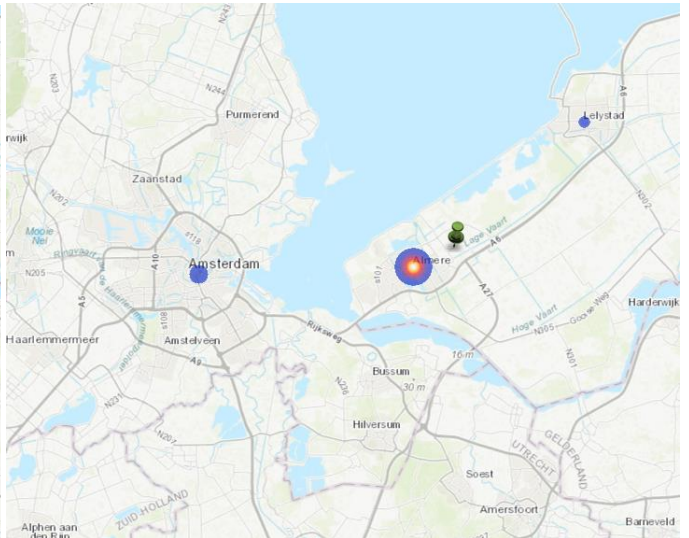


1. Amsterdam	67%
2. Den Haag	13%
3. Rotterdam	8%
4. Amersfoort	3%
5. Roermond	3%

P+R Almere Buiten

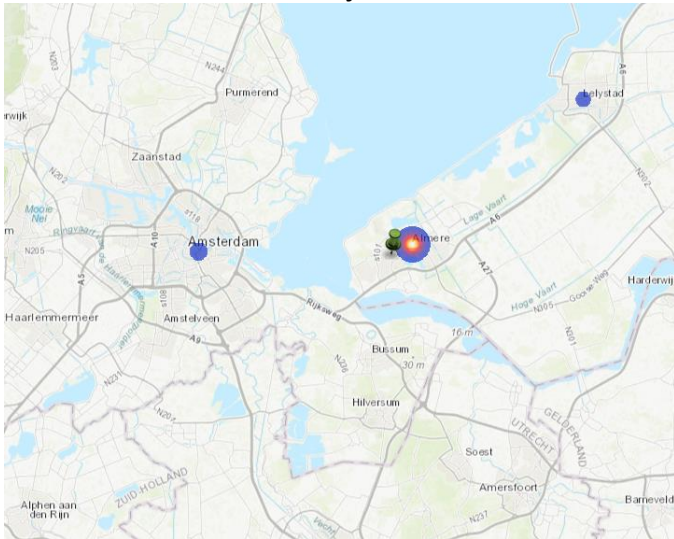


1. Almere	76%
2. Amsterdam	3%
3. Amstelveen	2%
4. Huizen	2%
5. Lelystad	1%

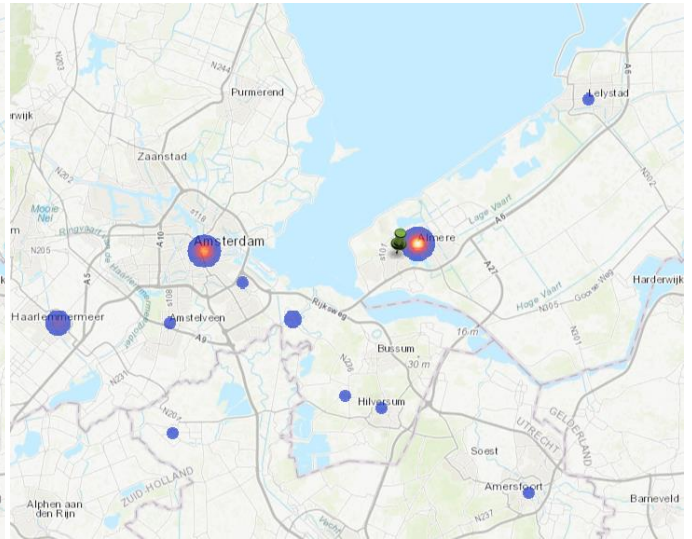


1. Almere	83%
2. Amsterdam	3%
3. Lelystad	1%
4. Rotterdam	1%
5. Vianen	1%

P+R Almere Muziekwijk

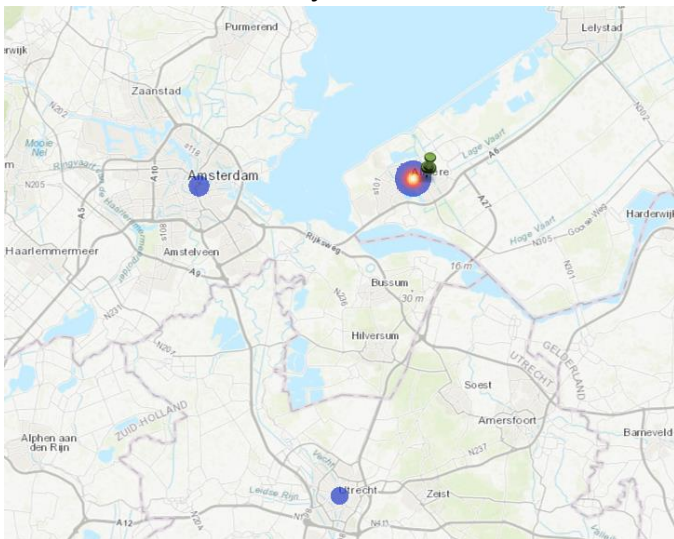


1. Almere	94%
2. Amsterdam	3%
3. Lelystad	2%
4. Zeewolde	1%
5. Diemen	1%

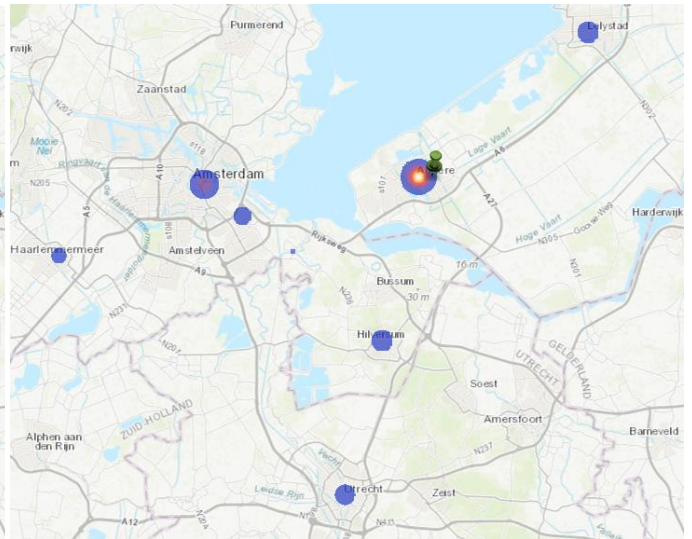


1. Almere	43%
2. Amsterdam	32%
3. Utrecht	6%
4. Haarlemmermeer	5%
5. Nijmegen	1%

P+R Almere Parkwijk

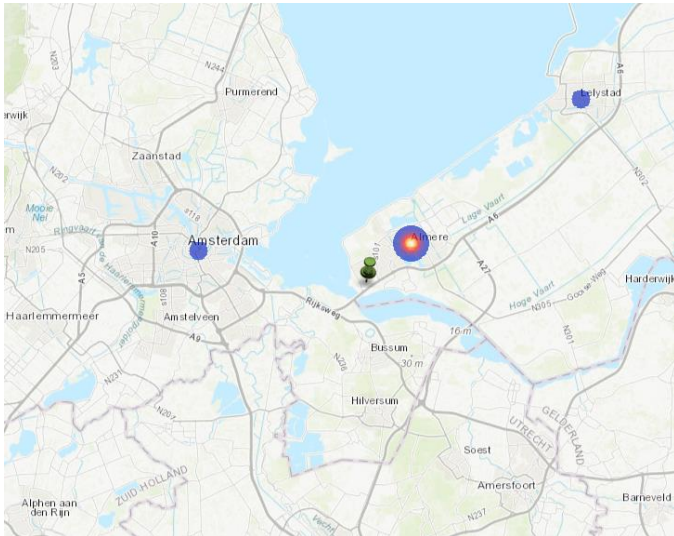


1. Almere	85%
2. Amsterdam	4%
3. Leiden	3%
4. Utrecht	3%
5. Zeewolde	1%

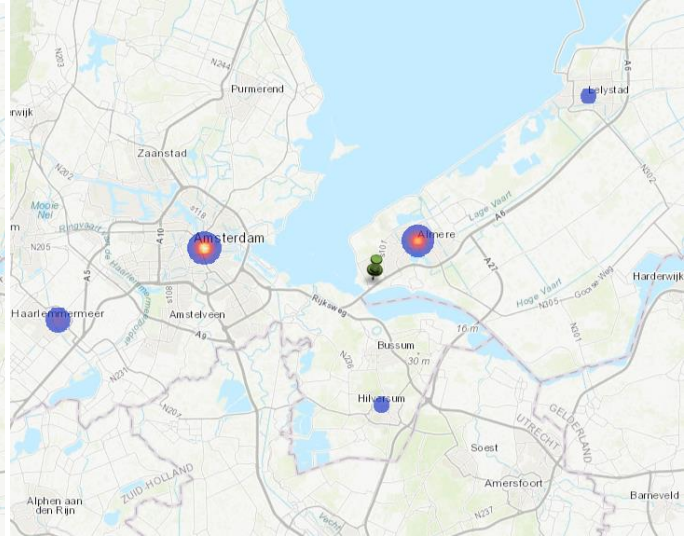


1. Almere	67%
2. Amsterdam	14%
3. Hilversum	4%
4. Lelystad	4%
5. Utrecht	3%

P+R Almere Poort

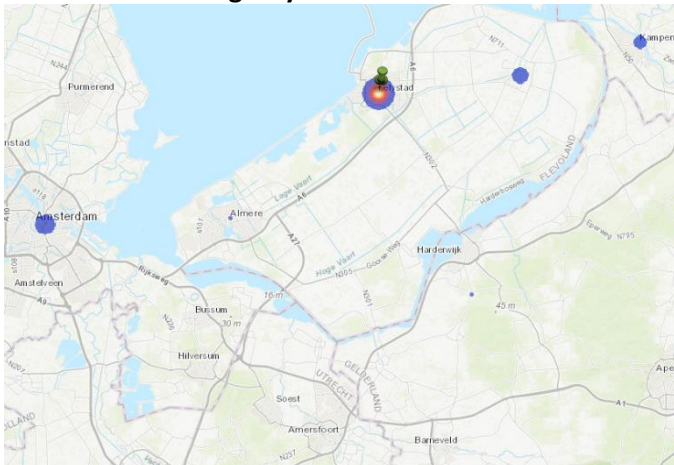


1. Almere	53%
2. Amsterdam	2%
3. Lelystad	2%
4. Amersfoort	1%
5. Apeldoorn	1%

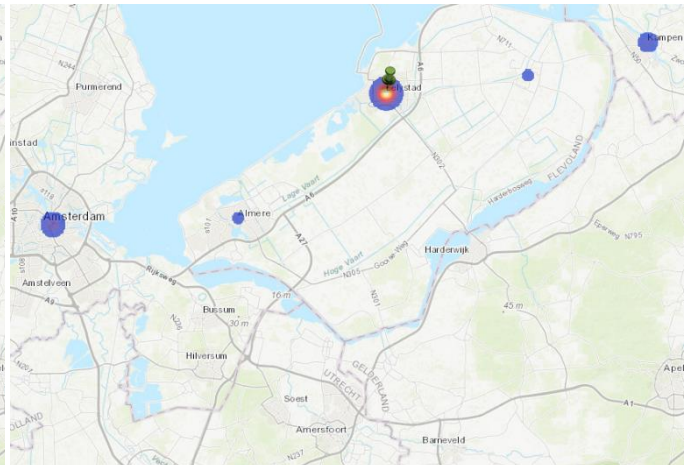


1. Amsterdam	32%
2. Almere	23%
3. Utrecht	6%
4. Haarlemmermeer	4%
5. Zwolle	2%

P+R De Waag Lelystad

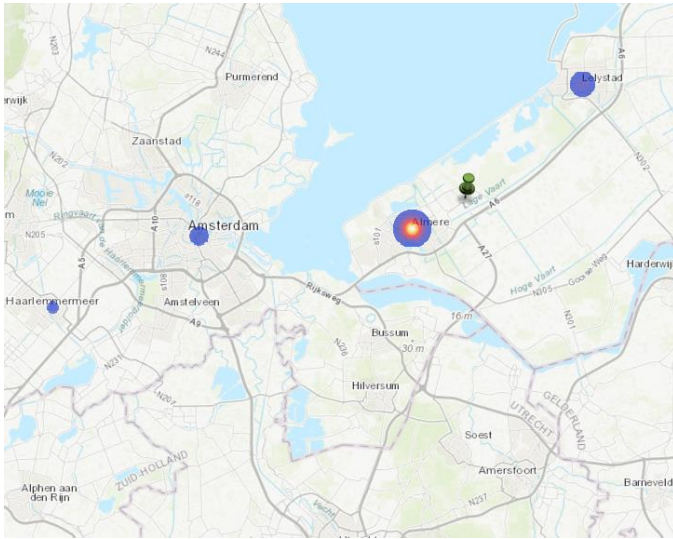


1. Lelystad	79%
2. Amsterdam	4%
3. Noordoostpolder	4%
4. Dronten	3%
5. Kampen	2%

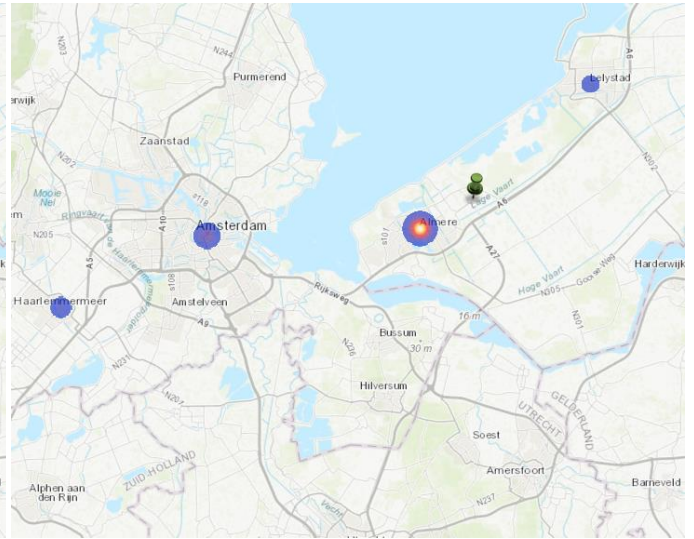


1. Lelystad	73%
2. Amsterdam	9%
3. Haarlemmermeer	4%
4. Kampen	4%
5. 's-Hertogenbosch	1%

P+R Almere Oostvaarders

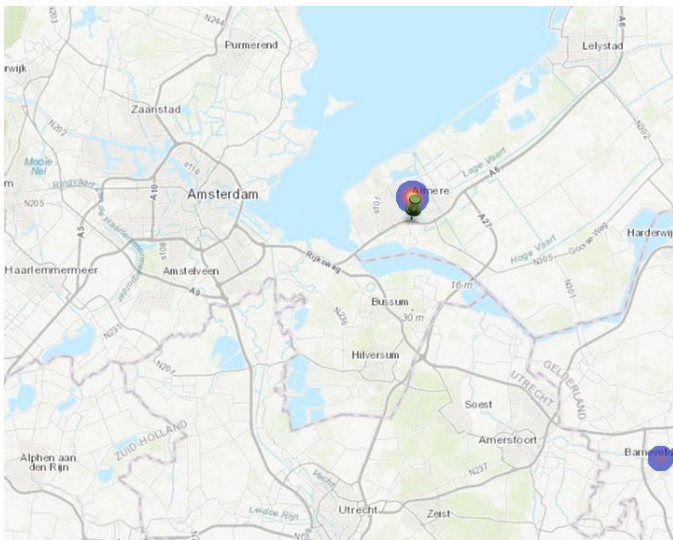


1. Almere	89%
2. Lelystad	7%
3. Amsterdam	3%
4. Haarlemmermeer	1%

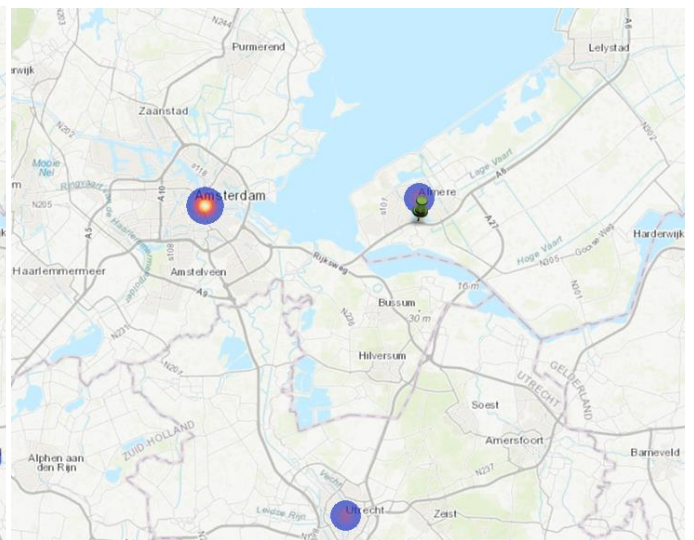


1. Almere	38%
2. Amsterdam	35%
3. Haarlemmermeer	12%
4. Zwolle	8%
5. Rotterdam	4%

P+R Almere 't Oor

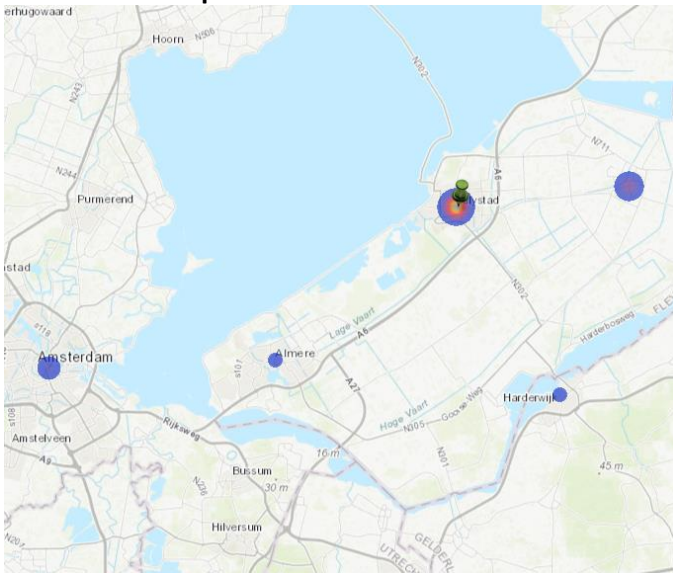


1. Almere	100%
-----------	------

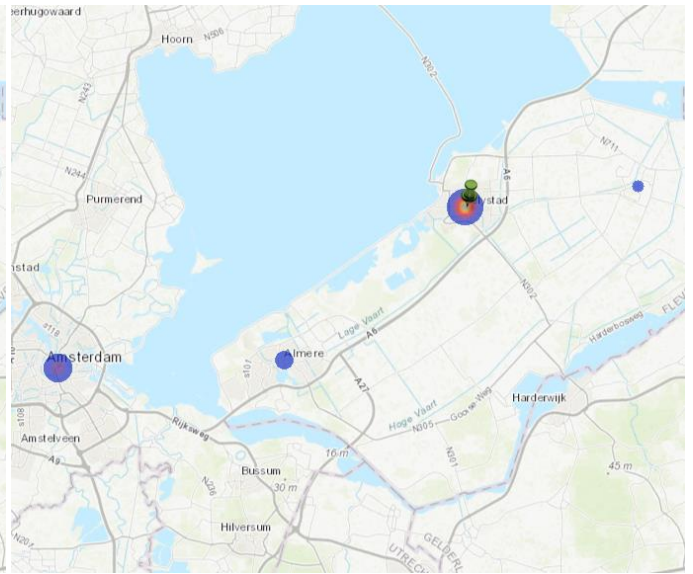


1. Amsterdam	80%
2. Almere	15%
3. Utrecht	4%
4. Antwerpen	1%

P+R Zilverpark



1. Lelystad	66%
2. Dronten	12%
3. Amsterdam	4%
4. Enkhuzen	3%
5. Deventer	3%



1. Lelystad	75%
2. Amsterdam	13%
3. Almere	2%
4. Haarlemmermeer	1%
5. Deventer	1%